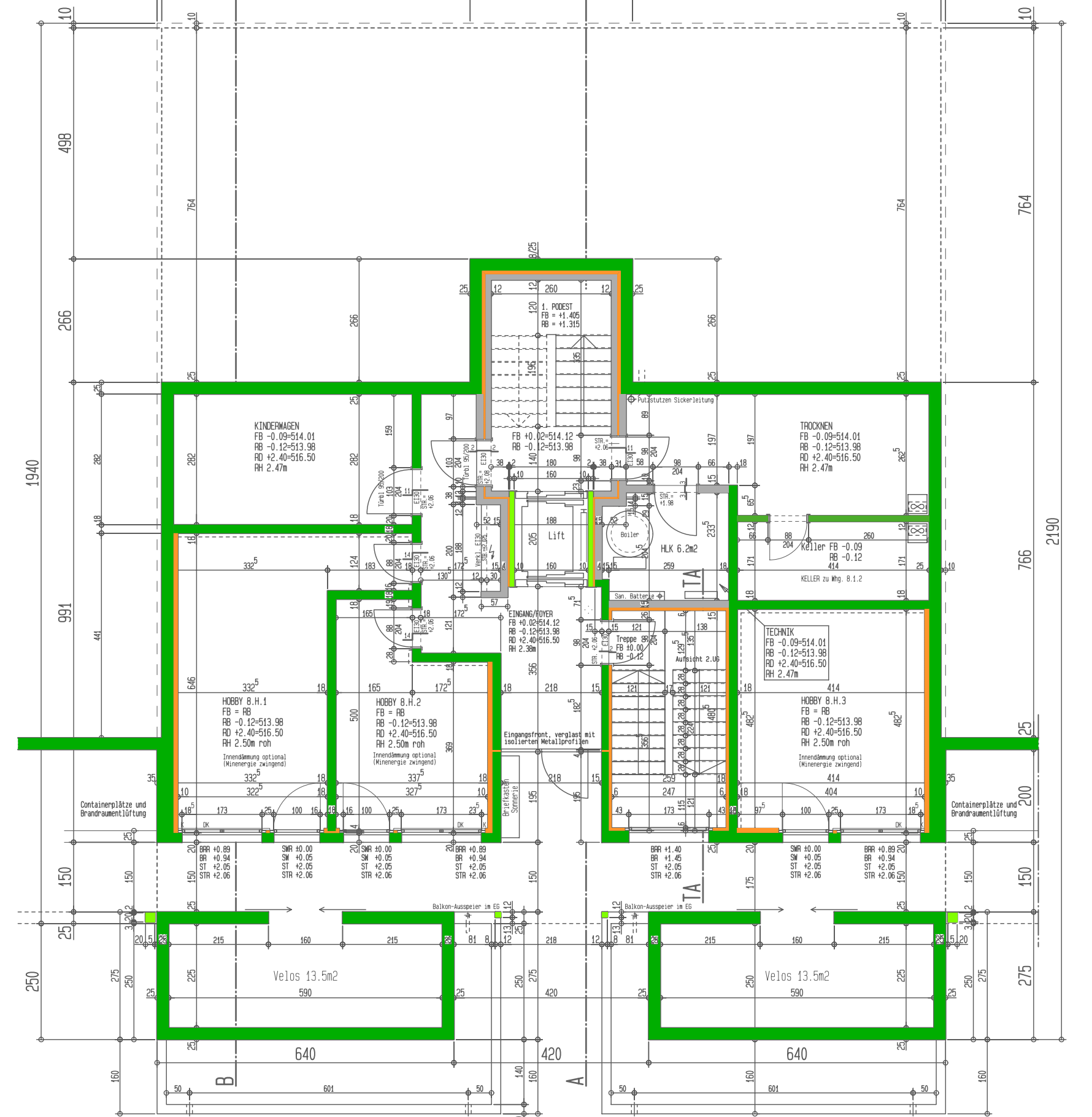
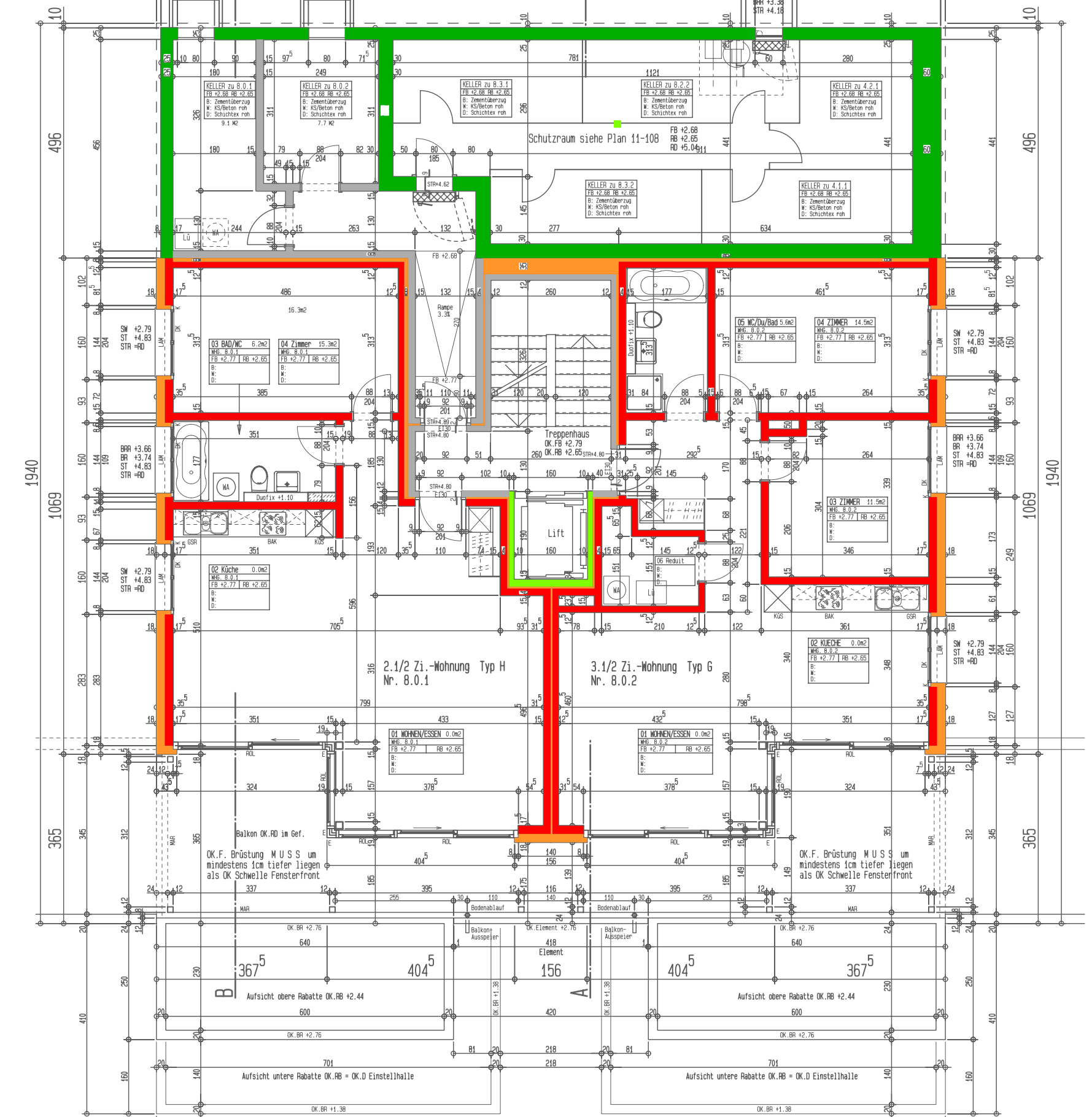


Sonnhalde 8: Grundriss 2. Untergeschoss, 1:100



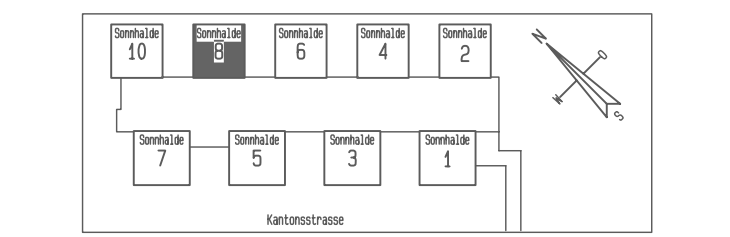
Sonnhalde 8: Grundriss 1. Untergeschoss, 1:100



Sonnhalde 8: Grundriss Erdgeschoss, 1:100

lectura Rev.:

| | | | |
|---|--|--|---|
| ■ STAHLBETON | ■ BACKSTEIN | ■ HOLZ (MASSIV) | ■ DÄMMUNGEN |
| ■ VORFABR. BETON | ■ KALKSANDSTEIN | ■ SPANPLATTEN | ■ SCHICHTEX MISAPOR |
| ■ MÖRTEL/GIPS | ■ MÖRTEL/GIPS | ■ MÖRTEL/GIPS | ■ MÖRTEL/GIPS |



±0.00 Haus 1 = OK.FB.EG = 514.10 M.Ü.M. ±0.00 Haus 2 = +12cm ab OK.FB. 1.UG = 514.10 M.Ü.M.

Bauprojekt Gestaltung Entwurf Submission, Kostenmanagement, Bauleitung
NOSETTI PARTNER
ARCHITEKTEN GMBH
PROJEKTIERUNGSBUERO SIA
 Haldenstrasse 2, 6021 Emmenbrücke
 Tel. 041/260 76 50 Fax 041/260 17 40

Roelli Architektur AG
 Oberdorfstrasse 11
 6232 Geunensee
 Telefon 041/261 64 34
 Fax 041/261 83 19

STALDER Generalunternehmungen GmbH Luzern

WOHN PARK MONTANA GEUNESSEE
 AUSFUEHRUNGSPLAN 1:100
 Grundrisse Haus 8, 2.UG, 1.UG, EG

Plan Nr. 08-102 BRÜLLER- UND AUSFUEHRUNGSANLAGE FORMAT B4cm x 29.7cm
 DATUM 04.08.2007 ARCHITECTUR- UND AUSFUEHRUNGSANLAGE GEZEICHNET HP, Mueller
 Mstb. 1 : 100 QUOTE: 1:100 DAW = ATELIER Rev. 2
 DAW = ATELIER Rev. 3
 DAW = ATELIER Rev. 4
 DAW = ATELIER Rev. 5
 DAW = ATELIER Rev. 6
 DAW = ATELIER Rev. 7
 DAW = ATELIER Rev. 8
 DAW = ATELIER Rev. 9
 DAW = ATELIER Rev. 10
 DAW = ATELIER Rev. 11
 DAW = ATELIER Rev. 12
 DAW = ATELIER Rev. 13
 DAW = ATELIER Rev. 14
 DAW = ATELIER Rev. 15
 DAW = ATELIER Rev. 16
 DAW = ATELIER Rev. 17
 DAW = ATELIER Rev. 18
 DAW = ATELIER Rev. 19
 DAW = ATELIER Rev. 20
 DAW = ATELIER Rev. 21
 DAW = ATELIER Rev. 22
 DAW = ATELIER Rev. 23
 DAW = ATELIER Rev. 24
 DAW = ATELIER Rev. 25
 DAW = ATELIER Rev. 26
 DAW = ATELIER Rev. 27
 DAW = ATELIER Rev. 28
 DAW = ATELIER Rev. 29
 DAW = ATELIER Rev. 30
 DAW = ATELIER Rev. 31
 DAW = ATELIER Rev. 32
 DAW = ATELIER Rev. 33
 DAW = ATELIER Rev. 34
 DAW = ATELIER Rev. 35
 DAW = ATELIER Rev. 36
 DAW = ATELIER Rev. 37
 DAW = ATELIER Rev. 38
 DAW = ATELIER Rev. 39
 DAW = ATELIER Rev. 40
 DAW = ATELIER Rev. 41
 DAW = ATELIER Rev. 42
 DAW = ATELIER Rev. 43
 DAW = ATELIER Rev. 44
 DAW = ATELIER Rev. 45
 DAW = ATELIER Rev. 46
 DAW = ATELIER Rev. 47
 DAW = ATELIER Rev. 48
 DAW = ATELIER Rev. 49
 DAW = ATELIER Rev. 50
 DAW = ATELIER Rev. 51
 DAW = ATELIER Rev. 52
 DAW = ATELIER Rev. 53
 DAW = ATELIER Rev. 54
 DAW = ATELIER Rev. 55
 DAW = ATELIER Rev. 56
 DAW = ATELIER Rev. 57
 DAW = ATELIER Rev. 58
 DAW = ATELIER Rev. 59
 DAW = ATELIER Rev. 60
 DAW = ATELIER Rev. 61
 DAW = ATELIER Rev. 62
 DAW = ATELIER Rev. 63
 DAW = ATELIER Rev. 64
 DAW = ATELIER Rev. 65
 DAW = ATELIER Rev. 66
 DAW = ATELIER Rev. 67
 DAW = ATELIER Rev. 68
 DAW = ATELIER Rev. 69
 DAW = ATELIER Rev. 70
 DAW = ATELIER Rev. 71
 DAW = ATELIER Rev. 72
 DAW = ATELIER Rev. 73
 DAW = ATELIER Rev. 74
 DAW = ATELIER Rev. 75
 DAW = ATELIER Rev. 76
 DAW = ATELIER Rev. 77
 DAW = ATELIER Rev. 78
 DAW = ATELIER Rev. 79
 DAW = ATELIER Rev. 80
 DAW = ATELIER Rev. 81
 DAW = ATELIER Rev. 82
 DAW = ATELIER Rev. 83
 DAW = ATELIER Rev. 84
 DAW = ATELIER Rev. 85
 DAW = ATELIER Rev. 86
 DAW = ATELIER Rev. 87
 DAW = ATELIER Rev. 88
 DAW = ATELIER Rev. 89
 DAW = ATELIER Rev. 90
 DAW = ATELIER Rev. 91
 DAW = ATELIER Rev. 92
 DAW = ATELIER Rev. 93
 DAW = ATELIER Rev. 94
 DAW = ATELIER Rev. 95
 DAW = ATELIER Rev. 96
 DAW = ATELIER Rev. 97
 DAW = ATELIER Rev. 98
 DAW = ATELIER Rev. 99
 DAW = ATELIER Rev. 100